



Schaub

ASSA ABLOY

SIGNATURE
& SYMPHONY

ASSA ABLOY, the global leader
in door opening solutions

SIGNATURE
RUSTIC



Mountain..... 8
 Perla & Chemin De Fer..... 10
 Artifex 11
 Vinci 13
 Ovale 14
 Siena 15
 Martello..... 16
 Viento 17

For image sources and design credits,
see page 115.

SIGNATURE
CONTEMPORARY



San Marco 20
 Heathrow 21
 Foncé 22
 Lumiere 23
 City Lights 24
 Positano 26
 Ice 28
 Tallmadge..... 29
 Mosaic 30
 Skyevale 31
 Finestrino 33
 Armadio 34
 Italian Contemporary..... 35
 Tenor 36
 Aria 37
 Profile..... 38
 Regatta 39
 Sorrento..... 41
 Classico & Wave..... 42
 Stainless Steel 43

SIGNATURE

TRANSITIONAL



Lumiere Transitional	46
Haniburton.....	47
Northport	49
Menlo Park.....	52
Empire.....	54
Steamworks.....	55

SIGNATURE

TRADITIONAL



Cabriole	58
Atherton	59
Traditional	60
Country	63
Colonial	64
French Farm.....	65
Stargaze.....	66
Kingsway	67
Meridian.....	68
Montcalm.....	69
Versailles	70
Arcadia.....	71
Casual Elegance	72
Corinthian	73
Firenza	74
Hinges.....	75

SYMPHONY



Crescendo	78
Interlude	79
Cadence	80
Arioso	81
Fair Isle	82
Avalon Bay	83
Imperial Shell	84
Mother of Pearl	85
Tiger Penshell	86
Chalice & Eastlake	87
Cantata	88
French Court	90
Swans	93
Sunburst	94
Sunflower	95
Sonata	96
Heirloom Treasures	97
Wine Themes	98
Nature	99
Index	100



EVERY PIECE IN OUR SYMPHONY COLLECTION IS RICH IN DESIGN AND DETAIL TO MAKE YOUR HOME TRULY STAND APART.

MOTHER-OF-PEARL

THE SMOOTH LINING OF THE PEARL OYSTER GIVES THIS MATERIAL ITS LUSTROUS SHEEN. ITS SILKY, ELEGANT APPEARANCE IS COVETED BY ALL CULTURES AROUND THE WORLD AND IS NOW AVAILABLE TO YOU IN OUR STUNNING RANGE OF SYMPHONY PIECES.

TIGER PENSHELL

SIMILAR TO ITS COUSIN THE OYSTER, TIGER PENSHELL IS THE BEAUTIFUL INTERIOR OF LARGE, SALT WATER CLAMS FOUND JUST OFF OF THE COAST IN THE BALMY, SHALLOW WATERS SURROUNDING THE PHILIPPINE ISLANDS. WITH VARIEGATED MARBLING, FROM LIGHT CREAM TO BRUNETTE, NO ONE PIECE IS EVER ALIKE, MAKING EACH AND EVERY ONE OF YOUR CABINETS ENTIRELY UNIQUE.

IMPERIAL SHELL

ALSO KNOWN AS PAUA SHELL, THIS ASTONISHINGLY ELEGANT SUBSTANCE RADIATES ALL THE COLORS OF THE RAINBOW. MATCHLESS IN APPEARANCE, ITS IRIDESCENT SHINE SPARKLES WITH THE WELCOMING WARMTH OF THE SOUTH PACIFIC.

LOST WAX SOLID BRASS

SOMETIMES CALLED "INVESTMENT CASTING", THIS IS THE METHOD THAT THE WORLD'S FINEST JEWELERS HAVE BEEN USING FOR CENTURIES TO CREATE SOME OF THEIR MOST ELABORATELY DETAILED PIECES OF JEWELRY. SUPREMELY SKILLED ARTISANS HAND MAKE EACH PIECE, GIVING EACH THEIR OWN UNIQUE PERSONALITY.





On This Page
Mountain cabinet hardware in Antique Bronze

RUSTIC



Rustic style honors the look, materials, and techniques of craftsmanship from bygone eras and applies them to a range of design aesthetics. Weathered profiles combined with living finishes, give Rustic designs a character all their own.

MOUNTAIN

CAST BRONZE
Unlacquered Living Finish



AS-Antique Silver ■ AZ-Antique Bronze ■ IN-Italian Nickel
NB-Natural Bronze ■ VI-Verde Imperiale

MOUNTAIN



CAST BRONZE
Unlacquered Living Finish



AS-Antique Silver ■ AZ-Antique Bronze ■ IN-Italian Nickel
NB-Natural Bronze ■ VI-Verde Imperiale

PERLA & CHEMIN DE FER

BRITANNIUM

Unlacquered Living Finish



ARTIFEX



BRITANNIUM
Unlacquered Living Finish



DP-Dark Pewter ■ N-Natural Britannium

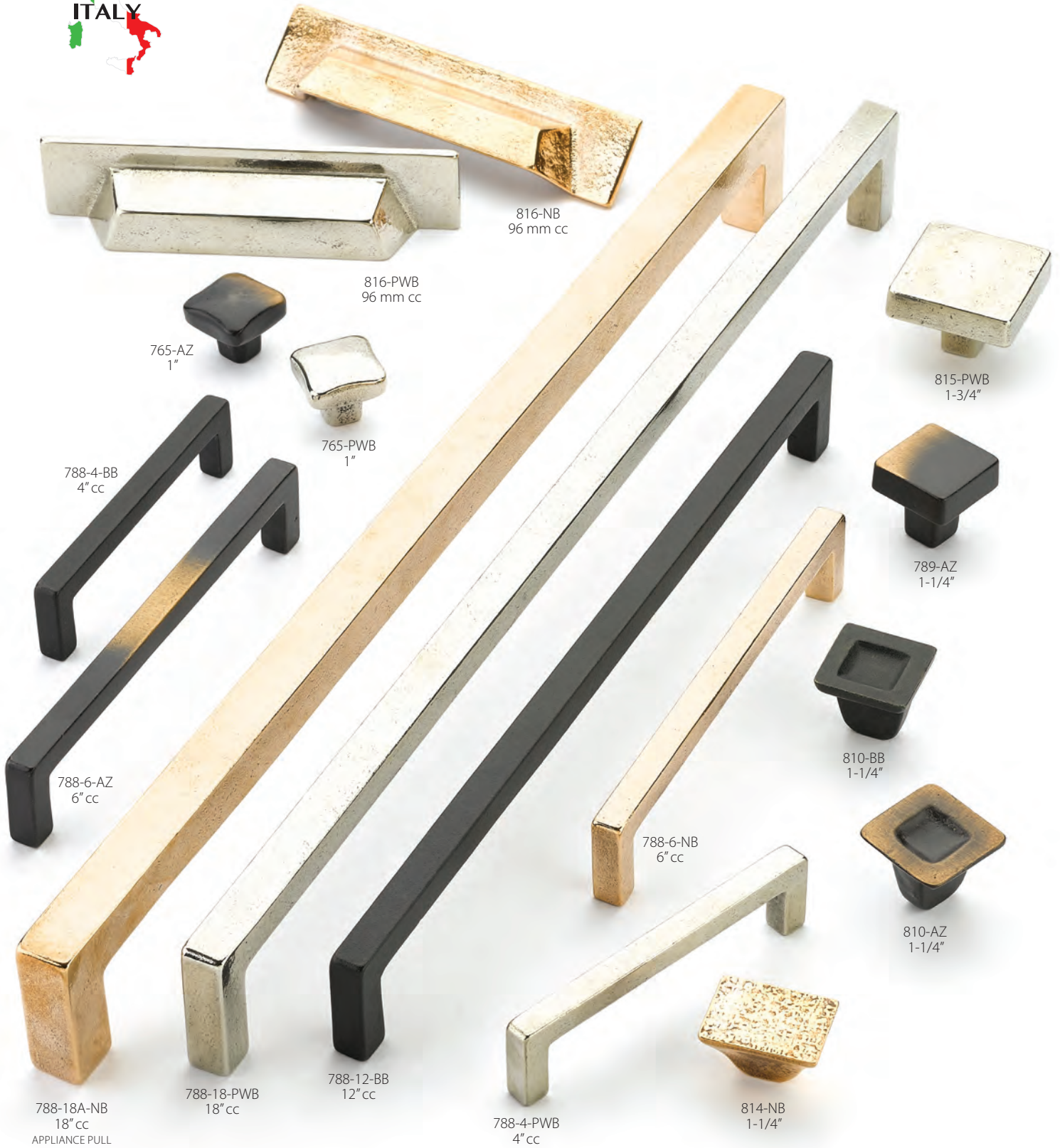


On This Page
Vinci cabinet hardware in Polished White Bronze

VINCI



CAST BRONZE
Unlacquered Living Finish



AZ-Antique Bronze ■ BB-Black Bronze ■ NB-Natural Bronze ■ PWB-Polished White Bronze

OVALE

CAST BRONZE
Unlacquered Living Finish



SIENA



MARTELLINO

BRITANNIUM

Unlacquered Living Finish



N-Natural Britannium

Items in this design group are not intended for use as appliance pulls.

VIENTO



BRITANNIUM
Unlacquered Living Finish



187-N
160 mm cc

189-N
305 mm cc

188-N
224 mm cc

186-N
128 mm cc

182-N
1-3/4" x 1-1/8"

185-N
160 mm cc

184-N
128 mm cc

183-N
96 mm cc

180-N
1-3/4"

181-N
1-1/2" x 1-1/2"

N-Natural Britannium

Items in this design group are not intended for use as appliance pulls.



On This Page
Lumiere cabinet hardware in Satin Brass

CONTEMPORARY



Contemporary designs pay homage to modern art and architecture in their unadorned styling. Sleek and simple lines in often-bold colors and materials complement and elevate all design themes and projects.

SAN MARCO



455-PN
160 mm cc

455-VS
160 mm cc

456-15
320 mm cc

456-SB
320 mm cc

454-26
96 mm cc

454-MB
96 mm cc

15-Satin Nickel ■ 26-Polished Chrome ■ MB-Matte Black
PN-Polished Nickel ■ SB-Satin Brass ■ VS-Vintage Steel

HEATHROW

SOLID
BRASS



26-Polished Chrome ■ BN-Brushed Nickel ■ MB-Matte Black
 PN-Polished Nickel ■ SSB-Signature Satin Brass

FONCÉ

BRASS
SOLID



ALL ITEMS ARE NON-ADJUSTABLE

MB-Matte Black ■ MB/PN-Matte Black Bar/Polished Nickel Stem
MB/SB-Matte Black Bar/Satin Brass Stem ■ PN-Polished Nickel ■ SB-Satin Brass

LUMIERE

BRASS
ADJUSTABLE ACRYLIC



10B-Oil Rubbed Bronze ■ 15-Satin Nickel ■ 26-Polished Chrome
BRG-Brushed Rose Gold ■ MB-Matte Black ■ PN-Polished Nickel ■ SB-Satin Brass

CITY LIGHTS

BRASS
GLASS



10B-Oil Rubbed Bronze ■ 15-Satin Nickel ■ 26-Polished Chrome
PN-Polished Nickel ■ PRG-Polished Rose Gold ■ SB-Satin Brass

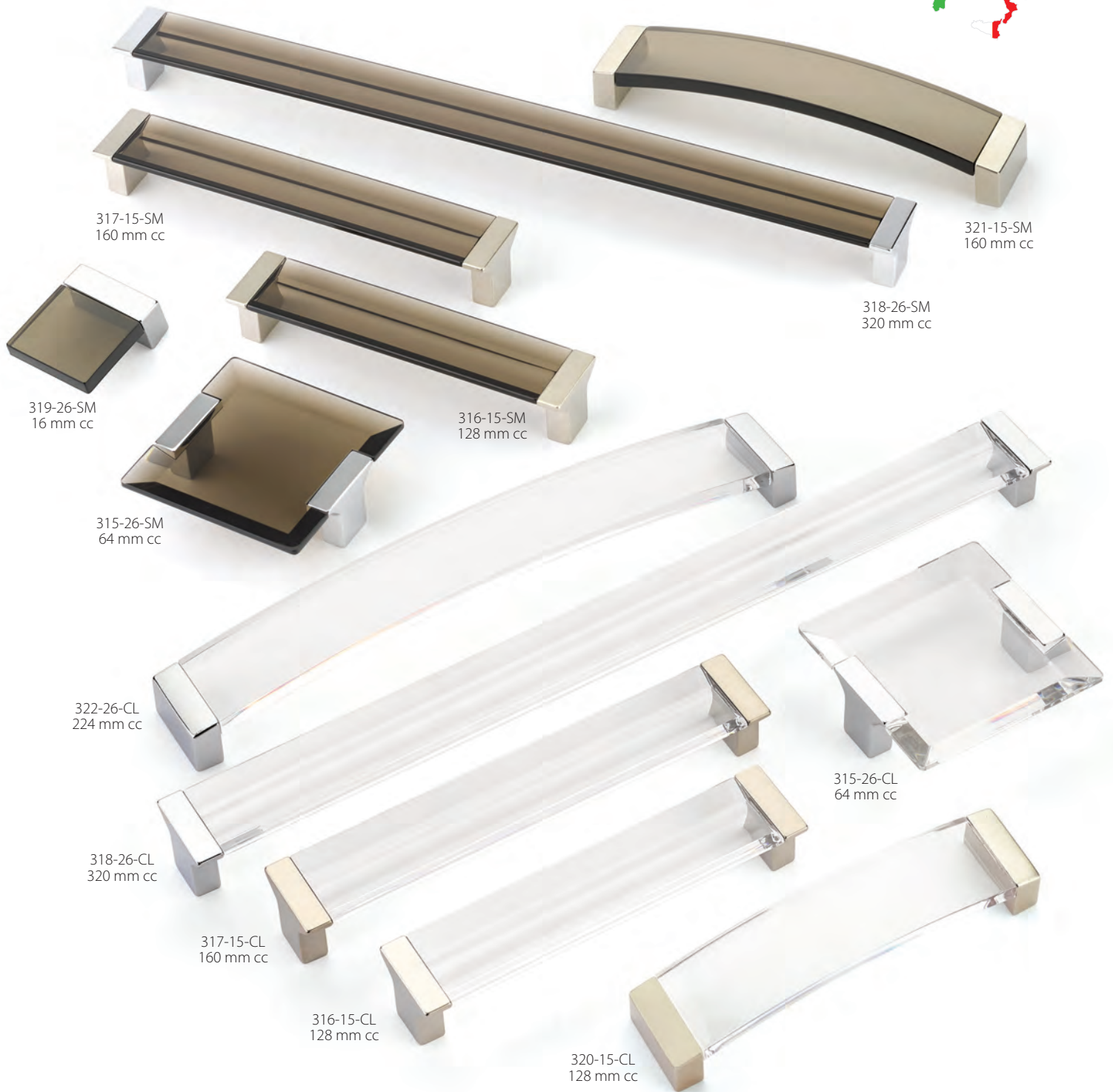
CITY LIGHTS

BRASS
GLASS



10B-Oil Rubbed Bronze ■ 15-Satin Nickel ■ 26-Polished Chrome
PN-Polished Nickel ■ SB-Satin Brass

POSITANO



317-15-SM
160 mm cc

321-15-SM
160 mm cc

318-26-SM
320 mm cc

319-26-SM
16 mm cc

316-15-SM
128 mm cc

315-26-SM
64 mm cc

322-26-CL
224 mm cc

315-26-CL
64 mm cc

318-26-CL
320 mm cc

317-15-CL
160 mm cc

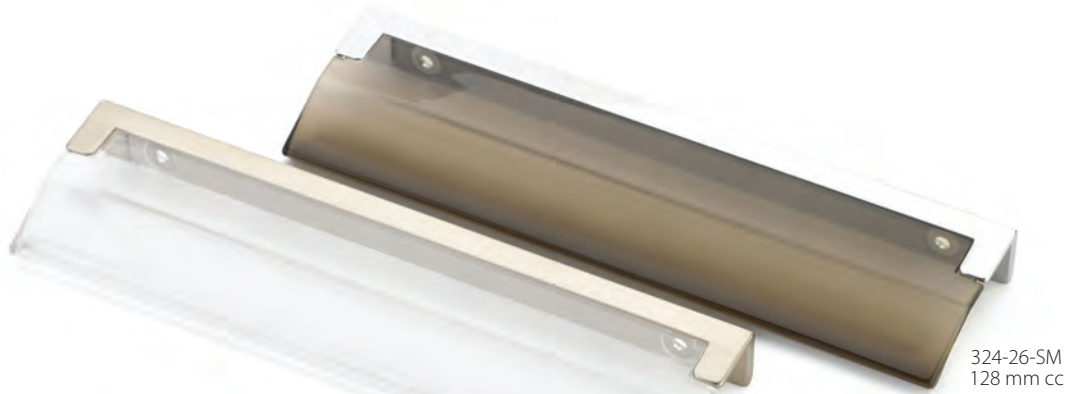
316-15-CL
128 mm cc

320-15-CL
128 mm cc

15-CL-Satin Nickel Clear ■ 15-SM-Satin Nickel Smoke
26-CL-Polished Chrome Clear ■ 26-SM-Polished Chrome Smoke

Items in this design group are not intended for use as appliance pulls.

POSITANO



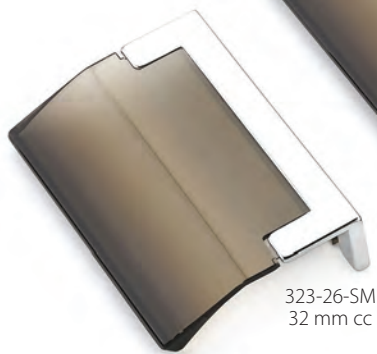
324-15-CL
128 mm cc

324-26-SM
128 mm cc



324-15-SM
128 mm cc

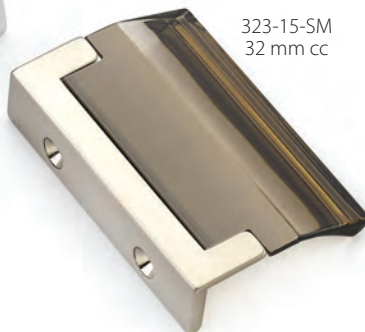
324-26-CL
128 mm cc



323-26-SM
32 mm cc



323-26-CL
32 mm cc



323-15-SM
32 mm cc



323-15-CL
32 mm cc

15-CL-Satin Nickel Clear ■ 15-SM-Satin Nickel Smoke
26-CL-Polished Chrome Clear ■ 26-SM-Polished Chrome Smoke



We recommend Positano edge pulls be installed on flat panel cabinets with a maximum thickness of 3/4" in order to achieve proper clearance. Edge pulls attach from inside drawer or cabinet face.

ICE



COO-Confetti Orange ■ COT-Confetti Turquoise ■ CWG-Confetti White Grey
 GBP-Green Blue Pebbles ■ IVS-Ivory Silk ■ PAQ-Pearl Aqua ■ PBL-Pearl Blue ■ PCL-Pearl Clear
 SBP-Sable Pebbles ■ SCS-Scarlet Silk ■ SPS-Sapphire Silk ■ WLP-White Lace Pebbles

TALLMADGE



27-SN-SB
4" cc

25-SN-BL
1-1/4"

25-BN-LM
1-1/4"

25-PN-TQ
1-1/4"

26-BN-LM
1-3/4" x 1-1/8"

27-BN-LB
4" cc

26-PN-WH
1-3/4" x 1-1/8"

26-PN-GY
1-3/4" x 1-1/8"

27-PN-TQ
4" cc

26-BN-LB
1-3/4" x 1-1/8"

26-BN-RG
1-3/4" x 1-1/8"

26-SN-BL
1-3/4" x 1-1/8"

25-PN-WH
1-1/4"

27-PN-WH
4" cc

Finish and Glass combinations:
 Black Nickel (BN) Finish: Light Bronze (LB), Lemon Ice (LM) or Rouge (RG)
 Polished Nickel (PN) Finish: Silver Grey (GY), Turquoise (TQ) or White (WH)
 Satin Nickel (SN) Finish: Black (BL), Steel Blue (SB) or White (WH)

MOSAIC



15-Satin Nickel ■ 26-Polished Chrome ■ FAB-French Antique Bronze

Items in this design group are not intended for use as appliance pulls.

SKYEVALE



300-MSV
1/2"



299-BC
1/2"

299-15
1/2"

305-BC
128/160 mm cc



302-MSV
128/160 mm cc



306-15
288/320 mm cc

305-MSV
128/160 mm cc

303-BC
288/320 mm cc

302-15
128/160 mm cc



304-BC
32 mm cc

302-26
128/160 mm cc

301-MSV
32 mm cc

301-26
32 mm cc

305-MBZ
128/160 mm cc

304-MBZ
32 mm cc

301-15
32 mm cc

15-Satin Nickel ■ 26-Polished Chrome ■ BC-Black Chrome
MBZ-Milano Bronze ■ MSV-Milano Silver

Items in this design group are not intended for use as appliance pulls.



On This Page
Finestrino cabinet hardware in Matte Black

FINESTRINO



450-BRBZ
32 mm cc



451-MB
160 mm cc



441-MB
64 mm cc



440-15
32 mm cc



446-BRBZ
192 mm cc



442-M26
160 mm cc



445-M26
128 mm cc



444-15
96 mm cc



443-MB
64 mm cc



441-26
64 mm cc

15-Satin Nickel ■ 26-Polished Chrome ■ BRBZ-Burnished Bronze
M26-Matte Chrome ■ MB-Matte Black

ARMADIO



15-Satin Nickel ■ 26-Polished Chrome ■ BRBZ-Burnished Bronze ■ MB-Matte Black

Items in this design group are not intended for use as appliance pulls.

ITALIAN CONTEMPORARY



SOLID
BRASS



501-LTBZ
4" cc

502-LTBZ
6" cc

502-26
6" cc

501-26
4" cc

501-15
4" cc

502-15
6" cc

512-LTBZ
6" cc

511-LTBZ
4" cc

511-26
4" cc

512-26
6" cc

512-15
6" cc

511-15
4" cc

513A-26
13-3/4" cc
APPLIANCE PULL

513A-LTBZ
13-3/4" cc
APPLIANCE PULL

503A-15
13-3/4" cc
APPLIANCE PULL

15-Satin Nickel ■ 26-Polished Chrome ■ LTBZ-Light Bronze

TENOR



15-Satin Nickel ■ ES/15-Espresso Brown/Satin Nickel
ES/26-Espresso Brown/Polished Chrome

Items in this design group are not intended for use as appliance pulls.

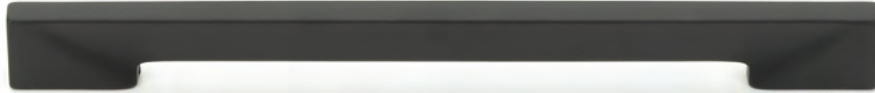
ARIA



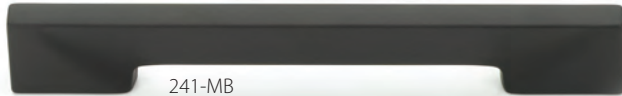
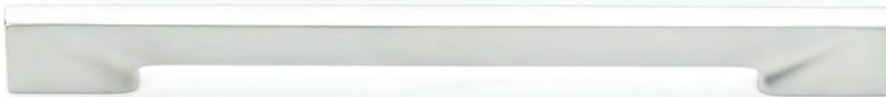
242-15
160/192 mm cc



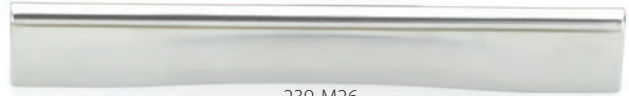
242-MB
160/192 mm cc



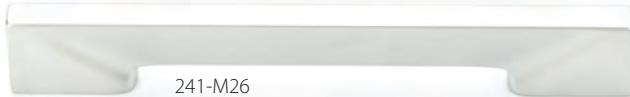
242-M26
160/192 mm cc



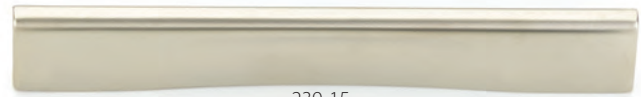
241-MB
96/128 mm cc



239-M26
96/128 mm cc



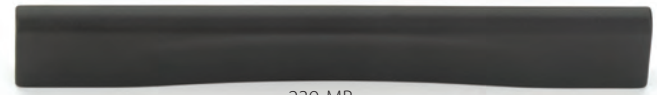
241-M26
96/128 mm cc



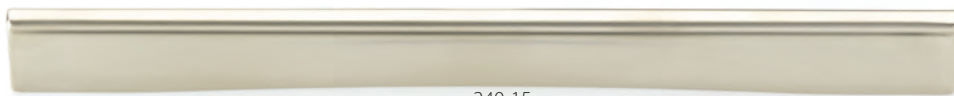
239-15
96/128 mm cc



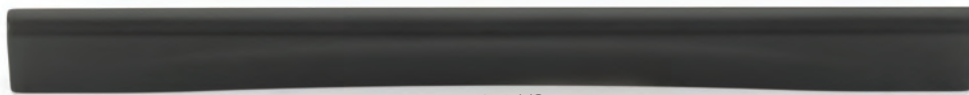
241-15
96/128 mm cc



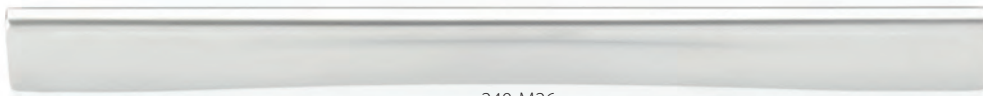
239-MB
96/128 mm cc



240-15
160/192 mm cc



240-MB
160/192 mm cc



240-M26
160/192 mm cc

PROFILE



15-Satin Nickel ■ 26-Polished Chrome ■ M26-Matte Chrome ■ MB-Matte Black

Items in this design group are not intended for use as appliance pulls.

REGATTA



15-Satin Nickel ■ 26-Polished Chrome ■ MB/15-Matte Black/Satin Nickel
MB/26-Matte Black/Polished Chrome

Items in this design group are not intended for use as appliance pulls.



On This Page
Sorrento cabinet hardware in Matte Black

SORRENTO



15-Satin Nickel ■ 26-Polished Chrome ■ BC-Black Chrome
MB-Matte Black ■ MBZ-Milano Bronze ■ MSV-Milano Silver

Items in this design group are not intended for use as appliance pulls.

CLASSICO & WAVE



15-Satin Nickel ■ 15S-Smooth Satin Nickel ■ 26-Polished Chrome
M26-Matte Chrome ■ MB-Matte Black

Items in this design group are not intended for use as appliance pulls.

STAINLESS STEEL



Solid Stainless Steel

Items in this design group are not intended for use as appliance pulls.

PART NUMBER, SIZE & DESCRIPTION

SS 010	Whistle Knob, 20 mm Diameter	SS 288	Bar Pull, 288 mm cc (348 mm overall, 13-3/4")	SS BOW 096	Bow Pull, 96 mm cc (115 mm overall, 4-1/2")
SS 012	Round Knob, 30 mm Diameter	SS 384	Bar Pull, 384 mm cc (444 mm overall, 17-1/2")	SS BOW 128	Bow Pull, 128 mm cc (156 mm overall, 6-1/8")
SS 014	"T" Knob, 35 mm x 35 mm	SS 448	Bar Pull, 448 mm cc (508 mm overall, 20")	SS BOW 224	Bow Pull, 224 mm cc (263 mm overall, 10-1/3")
SS 096	Bar Pull, 96 mm cc (156 mm overall, 6-1/8")	SS 544	Bar Pull, 544 mm cc (604 mm overall, 23-3/4")	SS BOW 288	Bow Pull, 288 mm cc (340 mm overall, 13-2/5")
SS 128	Bar Pull, 128 mm cc (188 mm overall, 7-3/8")	SS 640	Bar Pull, 640 mm cc (700 mm overall, 27-1/2")		
SS 160	Bar Pull, 160 mm cc (220 mm overall, 8-5/8")	SS 736	Bar Pull, 736 mm cc (796 mm overall, 31-3/8")		
SS 224	Bar Pull, 224 mm cc (284 mm overall, 11-1/8")	SS 832	Bar Pull, 832 mm cc (892 mm overall, 35-1/8")		



On This Page
Northport cabinet hardware in Signature Satin Brass

TRANSITIONAL



Transitional designs combine the best of both traditional and contemporary styles. Clean lines and rounded profiles help to balance beveled edges, while modern finishes provide an elegant and subtle look.

LUMIERE TRANSITIONAL

BRASS
ADJUSTABLE ACRYLIC



03-Polished Brass ■ 15-Satin Nickel ■ 26-Polished Chrome
PN-Polished Nickel ■ PRG-Polished Rose Gold ■ SB-Satin Brass

HANIBURTON

SOLID
BRASS



15-Satin Nickel ■ 26-Polished Chrome ■ MB-Matte Black
PN-Polished Nickel ■ SB-Satin Brass ■ UNBR-Unlacquered Brass



On This Page
Northport cabinet hardware in Signature Satin Brass

NORTHPORT



15-Satin Nickel ■ 26-Polished Chrome ■ ABZ-Ancient Bronze ■ BBZ-Brushed Bronze
BN-Brushed Nickel ■ MB-Matte Black ■ PN-Polished Nickel ■ SSB-Signature Satin Brass

NORTHPORT



15-Satin Nickel ■ 26-Polished Chrome ■ ABZ-Ancient Bronze ■ BBZ-Brushed Bronze
 BN-Brushed Nickel ■ MB-Matte Black ■ PN-Polished Nickel ■ SSB-Signature Satin Brass



On This Page
Northport cabinet hardware in Signature Satin Brass

MENLO PARK



15-Satin Nickel ■ 26-Polished Chrome ■ ABZ-Ancient Bronze
 BN-Brushed Nickel ■ MB-Matte Black ■ PN-Polished Nickel ■ SSB-Signature Satin Brass

MENLO PARK



15-Satin Nickel ■ 26-Polished Chrome ■ ABZ-Ancient Bronze
 BN-Brushed Nickel ■ MB-Matte Black ■ PN-Polished Nickel ■ SSB-Signature Satin Brass

EMPIRE



15-Satin Nickel ■ 26-Polished Chrome ■ ABZ-Ancient Bronze ■ AN-Antique Nickel
 BBZ-Brushed Bronze ■ BN-Brushed Nickel ■ EBZ-Empire Bronze ■ MB-Matte Black
 PN-Polished Nickel ■ SSB-Signature Satin Brass

STEAMWORKS



15-Satin Nickel ■ BBZ-Brushed Bronze
DP/C-Distressed Pewter/Copper ■ EBZ-Empire Bronze



On This Page
Country cabinet hardware in Polished Nickel

TRADITIONAL



Traditional designs include elegant accents and familiar, timeless shapes. Elements of classic European architecture emerge in Traditional design, including adorned engravings, antique silhouettes, rich metallic hues and baroque textures.

CABRIOLE



ATHERTON

SOLID
BRASS



574-26
3" cc



575-PN
3" cc



571-26
1-1/4"



570-PN
1-1/4"



576-10B
4" cc



579-26
4" cc



577-SB
8" cc



580-10B
8" cc



577-26
8" cc



579-PN
4" cc



574-SB
3" cc



572-26
1-1/4"



570-SB
1-1/4"



573-10B
3" cc



578-PN
15" cc
APPLIANCE PULL



581-10B
15" cc
APPLIANCE PULL



578-SB
15" cc
APPLIANCE PULL



572-10B
1-1/4"

TRADITIONAL

SOLID
BRASS



03-Polished Brass ■ 10B-Oil Rubbed Bronze ■ AB-Antique Brass
ALB-Antique Light Brass ■ DBZ-Distressed Bronze ■ MIBZ-Michelangelo Bronze

TRADITIONAL

SOLID
BRASS



15-Satin Nickel ■ 26-Polished Chrome ■ AN-Antique Nickel
DN-Distressed Nickel ■ FB-Flat Black ■ PN-Polished Nickel



On This Page
Country cabinet hardware in Polished Nickel

COUNTRY

SOLID
BRASS



10B-Oil Rubbed Bronze ■ 15-Satin Nickel ■ 26-Polished Chrome ■ AN-Antique Nickel
AUB-Aurora Bronze ■ FB-Flat Black ■ PN-Polished Nickel ■ SB-Satin Brass

COLONIAL

SOLID
BRASS



10B-Oil Rubbed Bronze ■ 15-Satin Nickel ■ 26-Polished Chrome ■ AN-Antique Nickel
AUB-Aurora Bronze ■ FB-Flat Black ■ PN-Polished Nickel ■ SB-Satin Brass

FRENCH FARM



ABZ-Ancient Bronze ■ AN-Antique Nickel ■ EBZ-Empire Bronze

STARGAZE

BRASS
GLASS



03-Polished Brass ■ 15-Satin Nickel ■ BZ-Bronze ■ PN-Polished Nickel

KINGSWAY



BRASS
GLASS



20-PN-SG
1-1/4"



20-ABZ-AL
1-1/4"



21-AN-CH
1-1/4"



21-PN-CB
1-1/4"



20-ABZ-SC
1-1/4"



20-PN-CW
1-1/4"



22-PN-SG
4" cc



22-ABZ-SC
4" cc



21-ABZ-CL
1-1/4"



20-PN-CB
1-1/4"



22-AN-GS
4" cc



21-AN-GS
1-1/4"



20-AN-GB
1-1/4"



21-AN-GB
1-1/4"



22-ABZ-CL
4" cc

Finish and Glass combinations:

Ancient Bronze (ABZ) Finish: Almond (AL), Chaparral (CL) or Scarlet (SC)

Antique Nickel (AN) Finish: Champagne (CH), Glacier Blue (GB) or Greystone (GS)

Polished Nickel (PN) Finish: Classic Black (CB), Classic White (CW) or Slate Grey (SG)

MERIDIAN

SOLID
BRASS



10B-Oil Rubbed Bronze ■ 15-Satin Nickel ■ ALP-Antique Light Polish
AN-Antique Nickel ■ AUB-Aurora Bronze ■ PN-Polished Nickel

MONTCALM

SOLID
BRASS



10B-Oil Rubbed Bronze ■ 15-Satin Nickel ■ ALP-Antique Light Polish
AN-Antique Nickel ■ MIBZ-Michelangelo Bronze ■ PN-Polished Nickel

VERSAILLES

SOLID
BRASS



752-10B
1-1/2"



753-10B
3" cc

754-10B
3-1/2" cc



751-10B
1-1/4"

761-10B
BACKPLATE
4-1/4" x 1"



762-10B
96 mm cc

763-10B
BACKPLATE
96 mm cc



764-ALP
10" cc
APPLIANCE PULL



753-ALP
3" cc

754-ALP
3-1/2" cc



752-15
1-1/2"

756-15
BACKPLATE
1-1/2"



751-ALP
1-1/4"

761-ALP
BACKPLATE
4-1/4" x 1"



753-15
3" cc

754-15
3-1/2" cc

ARCADIA

SOLID
BRASS

831-ALB
1-3/4"



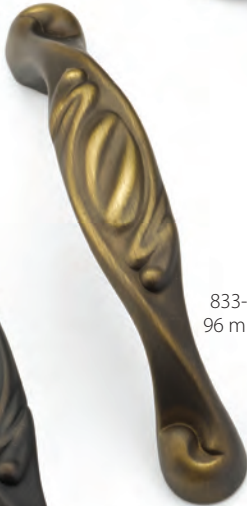
832-ALB
BACKPLATE
4-1/4" x 7/8"



830-AN
1-3/8"



834-ALB
3" cc



834-AN
3" cc



833-ALB
96 mm cc



836-AN
6" cc



833-ABZ
96 mm cc

833-ALB
96 mm cc

836-ABZ
6" cc



835-AN
15" cc
APPLIANCE PULL



830-ABZ
1-3/8"



832-ABZ
BACKPLATE
4-1/4" x 7/8"

ABZ-Ancient Bronze ■ ALB-Antique Light Brass ■ AN-Antique Nickel

CASUAL ELEGANCE

SOLID
BRASS



875-PN
3" cc



875-LAN
3" cc



873-RB
1-3/8"



874-PN
96 mm cc



8746-PN
6" cc



8746-RB
6" cc



8746-MIBZ
6" cc



874-MIBZ
96 mm cc

8746-RB
6" cc



873-MIBZ
1-3/8"



873-LAN
1-3/8"

869-RB
15" cc
APPLIANCE PULL



874-LAN
96 mm cc

LAN-Light Antique Nickel ■ MIBZ-Michelangelo Bronze
PN-Polished Nickel ■ RB-Redington Brass

CORINTHIAN

SOLID
BRASS



FIRENZA

SOLID
BRASS



284-LFBZ
128 mm cc



284-FS
128 mm cc



282-FS
96 mm cc



284-DFBZ
128 mm cc



282-DFBZ
96 mm cc



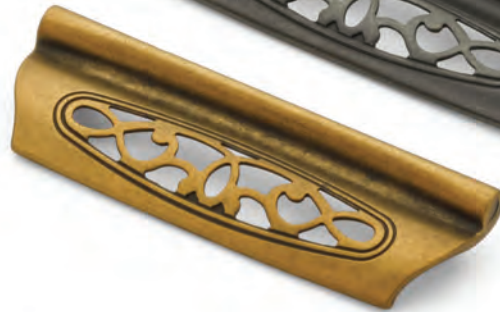
281-FS
96 mm cc



281-DFBZ
96 mm cc



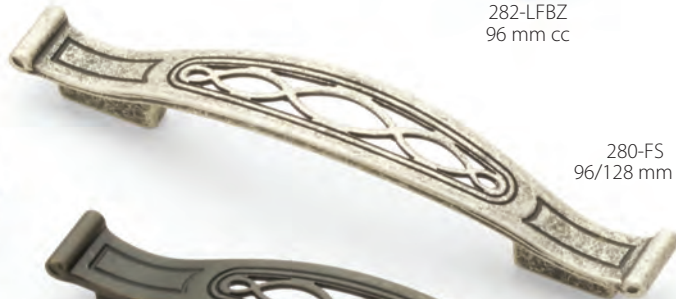
282-LFBZ
96 mm cc



281-LFBZ
96 mm cc



280-FS
96/128 mm cc



283-DFBZ
1-1/8"



280-DFBZ
96/128 mm cc



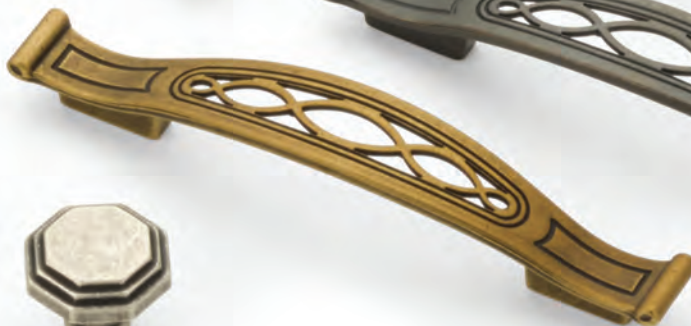
283-LFBZ
1-1/8"



283-FS
1-1/8"



280-LFBZ
96/128 mm cc



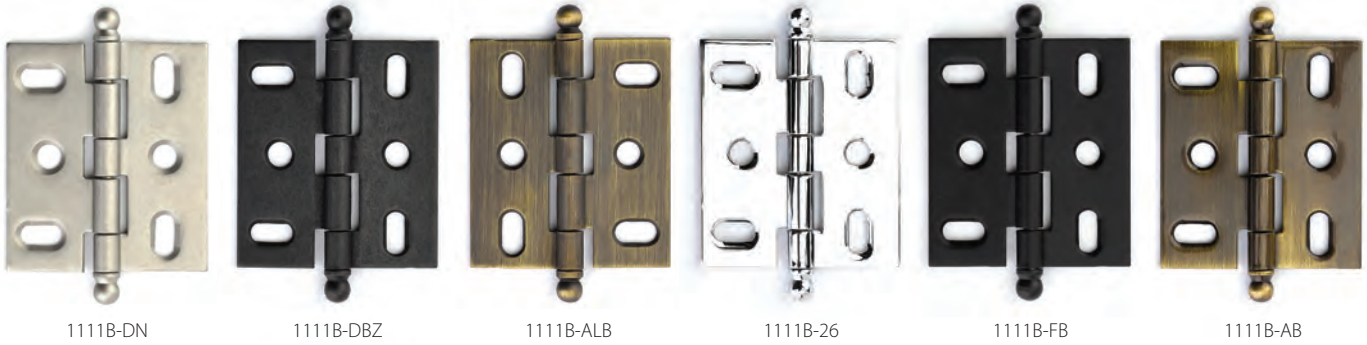
HINGES

SOLID BRASS

MORTISE HINGES

AVAILABLE IN BALL TIP ONLY

* Hinges available in all finishes shown, sold as eaches.



1111B-DN

1111B-DBZ

1111B-ALB

1111B-26

1111B-FB

1111B-AB

NON-MORTISE HINGES

AVAILABLE IN BALL TIP & MINARET

* Hinges available in all finishes shown, sold as eaches.



1100B-10B

1100B-PN

1100B-MIBZ

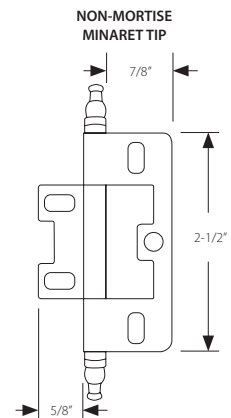
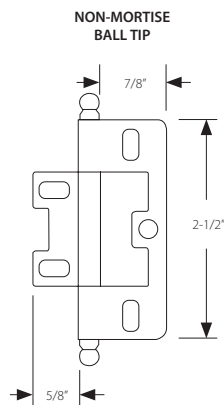
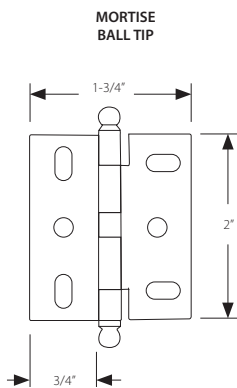
1100M-15

1100M-AN

1100M-03

SPECIFICATIONS

HINGE THICKNESS = 1/16"





On This Page
Nature cabinet hardware in Paris Brass

SYMPHONY



Symphony Collection pieces include those made with time-honored techniques like lost wax casting, those featuring whimsical elements like animals and florals, as well as motifs crafted from some of the most stunning organic materials on Earth, including Mother of Pearl and Tiger Penshell.

CRESCENDO

SOLID
BRASS



ED-Estate Dover ■ IM-Imperial Shell ■ MOP-Mother of Pearl
PEN-Tiger Penshell ■ PN-Polished Nickel

INTERLUDE

SOLID
BRASS



622-MOP/PN



620-MOP/PN



622-PEN/ED



620-PEN/ED



622-IM/PN



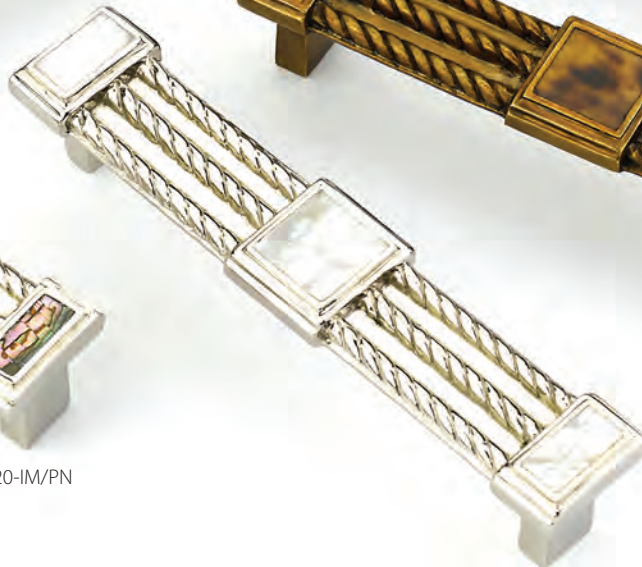
621-IM/PN



620-IM/PN



621-PEN/ED



621-MOP/PN

ED-Estate Dover ■ IM-Imperial Shell ■ MOP-Mother of Pearl
PEN-Tiger Penshell ■ PN-Polished Nickel

CADENCE

SOLID
BRASS



ED-Estate Dover ■ IM-Imperial Shell ■ MOP-Mother of Pearl
PEN-Tiger Penshell ■ PN-Polished Nickel

ARIOSO

SOLID
BRASS



ED-Estate Dover ■ IM-Imperial Shell ■ MOP-Mother of Pearl
PEN-Tiger Penshell ■ PN-Polished Nickel

FAIR ISLE

SOLID
BRASS



AD-Aged Dover ■ PB-Polished Brass ■ PN-Polished Nickel

AVALON BAY

SOLID
BRASS



AD-Aged Dover ■ DAB-Dark Antique Bronze ■ ED-Estate Dover
PB-Polished Brass ■ PEN-Tiger Penshell ■ PN-Polished Nickel

IMPERIAL SHELL

SOLID
BRASS



IM-Imperial Shell ■ PN-Polished Nickel

MOTHER OF PEARL

SOLID
BRASS



TIGER PENSHELL

SOLID
BRASS



DAB-Dark Antique Bronze ■ ED-Estate Dover ■ PEN-Tiger Penshell

CHALICE & EASTLAKE

SOLID
BRASS



CA-Cottage Antique ■ DG-Dark Glaze ■ MBR-Monticello Brass
MSL-Monticello Silver ■ WB-White Brass

CANTATA

SOLID
BRASS



DG-Dark Glaze ■ DIA-Dark Italian Antique ■ MBR-Monticello Brass

CANTATA

SOLID
BRASS



MSL-Monticello Silver ■ WB-White Brass

FRENCH COURT

SOLID
BRASS



936-WB



937-WB



987-WB



988-WB



996-WB



934L-WB

934R-WB



915-WB



935L-WB

935R-WB



919-WB



817-WB

FRENCH COURT

SOLID
BRASS



936-MSL



987-MSL



937-MSL



988-MSL



996-MSL



934L-MSL

934R-MSL



915-MSL



935L-MSL

935R-MSL



919-MSL



817-MSL

MSL-Monticello Silver

FRENCH COURT

SOLID
BRASS



936-MBR



987-MBR



937-MBR



988-MBR



996-MBR



934L-MBR

934R-MBR



915-MBR



935L-MBR

935R-MBR



919-MBR



817-MBR

SWANS

SOLID
BRASS



SUNBURST

SOLID
BRASS



ED-Estate Dover ■ SA-Silver Antique ■ HLB-Hi Lited Bronze

SUNFLOWER

SOLID
BRASS



DG-Dark Glaze ■ ED-Estate Dover ■ WB-White Brass

SONATA

SOLID
BRASS



DAB-Dark Antique Bronze ■ PAR-Paris Brass ■ PN-Polished Nickel ■ WB-White Brass

HEIRLOOM TREASURES

SOLID
BRASS



960P-PB/AB



953K-ED



960K-PB/AB



953P-ED



954K-AB



954P-AB



958P-AB



952P-DGW



952K-DGW



958K-AB

WINE THEMES

SOLID
BRASS



AB-Antique Brass ■ AWW-Antique White Wash ■ DBH-Dark Bronze Hi Lited
ED-Estate Dover ■ MOP-Mother-of-Pearl ■ SN-Satin Nickel ■ PEN-Tiger Penshell

NATURE

SOLID
BRASS

865-MOP/DSW



895-PBZ/HBZ



918-ED



951S-PEN



980L-PB/BZ



980R-PB/BZ



864-MOP/ED



897-ED

908-PBZ



892-MOP/ED



891-PAR



BZ-Bronze ■ DSW-Dark Sherwood ■ ED-Estate Dover
HBZ-Hi Lited Bronze ■ MOP-Mother-of-Pearl ■ PAR-Paris Brass ■ PB-Polished Brass
PBZ-Pompeian Bronze ■ PEN-Tiger Penshell (PEN)

INDEX

PART	COLLECTION	PAGE	PULL CENTER TO CENTER	KNOB DIAMETER	PROJECTION	BASE DIAMETER	OVERALL	SCREW SIZE
20-	Kingsway	67		1-1/4"	1"	1"		#8-32
21-	Kingsway	67		1-1/4"	1"	1" x 1"		#8-32
22-	Kingsway	67	4"		1-1/8"	3/4"	5"	#8-32
25-	Tallmadge	29		1-1/4"	1-1/4"	1/2"		#8-32
26-	Tallmadge	29		1-3/4" x 1-1/8"	1-1/4"	1/2" x 3/8"		#8-32
27-	Tallmadge	29	4"		1-1/4"	1/2" x 3/8"	5-7/8"	#8-32
30-	Ice	28	3"		1"	1/2"	4-1/2"	#8-32
31-	Ice	28		1-1/2"	1"	1/2"		#8-32
34-	Ice	28		1-1/2" x 1-1/2"	1"	1/2"		#8-32
52-	City Lights	24		1-3/4" x 1-3/8"	1-1/2"	1-1/4"	1-3/4" x 1-3/8"	#8-32
53-	City Lights	24		1-3/4"	1-1/8"	1-1/4"		#8-32
54-	City Lights	24		1-3/4"	1-1/2"	1-1/4"		#8-32
55-	City Lights	24		1-1/8"	1-3/8"	7/8"		#8-32
56-	City Lights	24		1-3/8"	1-1/8"	7/8"		#8-32
57-	City Lights	24		1-1/4"	1-1/8"	7/8"		#8-32
59-	City Lights	24		1-3/8"	1-3/4"	3/4"		#8-32
60-	City Lights	24		1-3/4" x 1-1/8"	1-1/2"	7/8"	1-3/4" x 1-1/8"	#8-32
61-	City Lights	24		1-1/4"	1-1/8"	3/4"		#8-32
63-	Cabriole	58		1-1/8"	1"	7/8"		#8-32
64-	Cabriole	58	96 mm		1-3/8"	3/8"	4"	#8-32
64-6-	Cabriole	58	6"		1-1/2"	1/2"	6-1/2"	#8-32
64-8-	Cabriole	58	8"		1-5/8"	1/2"	8-1/2"	#8-32
64-13-	Cabriole	58	13"		2-1/2"	5/8" x 7/8"	14"	1/4-20
70-	Stargaze	66		1-1/8"	1-5/8"	3/4"		#8-32
71-	Stargaze	66		1-1/4"	1-1/8"	3/4"		#8-32
72-	Stargaze	66		1-1/16"	1-1/16"	3/4"		#8-32
74-	City Lights	25		7/8"	1-1/4"	7/8"		#8-32
76-	City Lights	25		1-1/8"	1-3/8"	1-1/8"		#8-32
77-	City Lights	25		1-3/8"	3/4"	1-1/4"		#8-32
78-	Steamworks	55		1-1/4"	1"	3/4"		#8-32
79-	Steamworks	55	96 mm		1-1/4"	1/2"	4-1/2"	#8-32
79-6-	Steamworks	55	6"		1-1/4"	1/2"	7"	#8-32
79-8-	Steamworks	55	8"		1-3/8"	5/8"	9-1/4"	#8-32
79-12-	Steamworks	55	12"		2"	7/8"	13-7/8"	1/4-20
79-15-	Steamworks	55	15"		2-1/4"	1"	17"	1/4-20

INDEX

PART	COLLECTION	PAGE	PULL CENTER TO CENTER	KNOB DIAMETER	PROJECTION	BASE DIAMETER	OVERALL	SCREW SIZE
131-	Artifex	11		1-1/2"	1-3/8"	5/8"		M4
132-	Artifex	11		1-1/8"	1-1/4"	5/8"		M4
133-	Perla	10		1-3/4" x 1"	1-1/4"	5/8"		M4
134-	Perla	10		1-3/8"	1-1/4"	5/8"		M4
135-	Perla	10		1-3/8"	1-1/4"	5/8"		M4
136-	Perla	10	128 mm		1-1/8"	1-3/8"	6-1/2"	M4
137-	Perla	10	64 mm		1-1/8"		3-3/8" x 1-1/4"	M4
139-	Perla	10	12"		1-1/2"	2"	15"	M6
140-	Perla	10	12"		2-1/8"	2-1/2"	16-1/8"	M6
141-64-	Chemin de Fer	10	64 mm		1-1/8"	1/2"	3-3/4"	M4
141-96-	Chemin de Fer	10	96 mm		1-1/8"	1/2"	5"	M4
141-128-	Chemin de Fer	10	128 mm		1-1/8"	9/16"	6-5/8"	M4
141-224-	Chemin de Fer	10	224 mm		1-3/8"	9/16"	10"	M4
141-384-	Chemin de Fer	10	384 mm		1-3/8"	5/8"	16-3/4"	M4
143-300-	Chemin de Fer	10	300 mm		2-1/2"	1-1/16"	14-3/8"	M4
144-	Chemin de Fer	10			1-1/8"	1/2"	1-3/4"	M4
170-	Martello	16		1-3/4"	1"	1/2"		M4
171-	Martello	16		1-1/2" x 1-1/2"	1"	1/2"		M4
172-	Martello	16		1-3/4" x 1-1/8"	1"	1/2"		M4
173-	Martello	16	96 mm		3/4"	1/2"	4-1/2" x 1-5/8"	M4
174-	Martello	16	128 mm		1"	3/8" x 1"	5-1/2"	M4
175-	Martello	16	160 mm		1-1/8"	7/8" x 1/2"	6-7/8"	M4
176-	Martello	16	128 mm		1-3/8"	1/2"	7"	M4
177-	Martello	16	160 mm		1-3/8"	1/2"	8-1/2"	M4
178-	Martello	16	224 mm		1-3/8"	1/2"	10-7/8"	M4
179-	Martello	16	305 mm		1-3/8"	1/2"	14"	M4
180-	Viento	17		1-3/4"	1"	1/2"		M4
181-	Viento	17		1-1/2" x 1-1/2"	1"	1/2"		M4
182-	Viento	17		1-3/4" x 1-1/8"	1"	1/2"		M4
183-	Viento	17	96 mm		3/4"	1/2"	4-1/2" x 1-5/8"	M4
184-	Viento	17	128 mm		1"	3/8" x 1"	5-1/2"	M4
185-	Viento	17	160 mm		1-1/8"	7/8" x 1/2"	6-7/8"	M4
186-	Viento	17	128 mm		1-3/8"	1/2"	7"	M4
187-	Viento	17	160 mm		1-3/8"	1/2"	8-1/2"	M4
188-	Viento	17	224 mm		1-3/8"	1/2"	10-7/8"	M4

INDEX

PART	COLLECTION	PAGE	PULL CENTER TO CENTER	KNOB DIAMETER	PROJECTION	BASE DIAMETER	OVERALL	SCREW SIZE
189-	Viento	17	305 mm		1-3/8"	1/2"	14"	M4
200-	Northport	49-50	3-1/2"		1-3/8"	1-1/8"	4-1/4"	#8-32
201-	Northport	49-50	4"		1-3/8"	1-1/8"	4-3/4"	#8-32
202-	Northport	49-50	6"		1-1/2"	1-1/2"	7"	#8-32
203-	Northport	49-50	10"		1-1/2"	1-1/2"	11"	#8-32
204-	Northport	49-50	12"		1-1/2"	1-1/2"	13"	#8-32
205-	Northport	49-50	3-1/2"		1-3/8"	1"	4-1/2"	#8-32
206-	Northport	49-50	4"		1-3/8"	1"	5"	#8-32
207-	Northport	49-50	6"		1-1/2"	1"	7"	#8-32
208-	Northport	49-50	10"		1-1/2"	1"	11"	#8-32
209-	Northport	49-50	12"		1-1/2"	1"	13"	#8-32
210-	Northport	49-50		1-3/8"	1-1/8"	1"		#8-32
211-	Northport	49-50		1-3/8"	1-1/8"	1"		#8-32
212-	Northport	49-50	5"		1-3/16"	1 1/4"	6"	#8-32
213-	Northport	49-50	8"		1 1/4"	1 1/4"	9"	#8-32
214-	Northport	49-50	15"		1-7/8"	1-3/8"	16"	#8-32
215-	Northport	49-50		1-3/8"	1-1/8"	1"		#8-32
216-	Northport	49-50	5"		1-3/16"	1"	6"	#8-32
217-	Northport	49-50	8"		1-1/4"	1-1/4"	9"	#8-32
218-	Northport	49-50	15"		1-3/4"	1-3/8"	16-1/2"	#8-32
219-	Northport	49-50		1-3/8"	1-1/8"	1"		#8-32
221-	Classico	42	128 mm		7/8"	5/8" x 1/2"	5-3/8"	M4
222-	Classico	42	160 mm		7/8"	5/8" x 1/2"	6-3/4"	M4
223-	Classico	42	192 mm		7/8"	5/8" x 1/2"	8-1/8"	M4
224-	Classico	42	320 mm		7/8"	5/8" x 1/2"	13-1/8"	M4
233-	Mosaic	30	320 mm		1"	1/2" x 1/4"	14-1/2"	M4
234-	Mosaic	30	32 mm	1-7/8"	7/8"	1-5/8" x 3/8"	1-7/8"	M4
235-	Mosaic	30	32 mm		7/8"	1-5/8" x 3/8"	1" x 1-7/8"	M4
236-	Mosaic	30	128 mm		1"	1/2" x 1/4"	6-1/2" x 1"	M4
237-	Mosaic	30	32 mm		7/8"	1-5/8" x 3/8"	1" x 1-7/8"	M4
239-	Aria	37	96/128 mm		7/8"	1/4"	5-1/2"	M4
240-	Aria	37	160/192 mm		7/8"	1/4"	8"	M4
241-	Aria	37	96/128 mm		7/8"	3/8"	5-1/2"	M4
242-	Aria	37	160/192 mm		7/8"	3/8"	8"	M4
244-064-	Wave	42	64 mm		7/8"		3-5/8" x 3/4"	M4

INDEX

PART	COLLECTION	PAGE	PULL CENTER TO CENTER	KNOB DIAMETER	PROJECTION	BASE DIAMETER	OVERALL	SCREW SIZE
244-160-	Wave	42	160 mm		1"		7-3/4" x 1"	M4
244-192-	Wave	42	192 mm		1"		9-1/4" x 1"	M4
244-320-	Wave	42	320 mm		1"		14-1/4" x 1"	M4
245-128-	Tenor	36	128 mm		1-3/8"		5-1/2" x 1-1/4"	M4
245-160-	Tenor	36	160 mm		1-3/8"		6-3/4" x 1-1/4"	M4
245-224-	Tenor	36	224 mm		1-3/8"		9-1/4" x 1-1/4"	M4
245-288-	Tenor	36	288 mm		1-3/8"		11-3/4" x 1-1/4"	M4
245-384-	Tenor	36	384 mm		1-3/8"		15-1/2" x 1-1/4"	M4
246-128-	Tenor	36	128 mm		1-5/8"		5-1/2" x 3/8"	M4
246-160-	Tenor	36	160 mm		1-5/8"		6-3/4" x 3/8"	M4
246-224-	Tenor	36	224 mm		1-5/8"		9-1/4" x 3/8"	M4
246-288-	Tenor	36	288 mm		1-5/8"		11-3/4" x 3/8"	M4
246-384-	Tenor	36	384 mm		1-5/8"		15-1/2" x 3/8"	M4
247-096-	Profile	38	96 mm		1-1/16"	1/4"	5-3/8"	M4
247-128/160-	Profile	38	128/160 mm		1-1/16"	1/4"	7-15/16"	M4
247-192/224-	Profile	38	192/ 224 mm		1-1/16"	1/4"	10-1/2"	M4
247-320/352-	Profile	38	320/352 mm		1-1/16"	1/4"	16-1/2"	M4
248-096-	Profile	38	96/128 mm		1-1/16"	3/16"	5-3/8"	M4
248-160-	Profile	38	160/192 mm		1-1/16"	3/16"	7-7/8"	M4
248-288-	Profile	38	288/320 mm		1-1/16"	3/16"	12-15/16"	M4
248-448-	Profile	38	448/480 mm		1-1/16"	3/16"	19-3/16"	M4
250-	Siena	15		1-3/8"	1"	3/4"		#8-32
251-	Siena	15		1-1/2"	1-1/8"	3/4"		#8-32
252-	Siena	15		1-1/4"	1-1/8"	3/4"	3/4" x 1-1/4"	#8-32
253-	Siena	15		2-7/8"	1-1/2"	3/4"	3/4" x 2-7/8"	#8-32
254-	Siena	15	3"		1"		1-3/4" x 4-3/4"	#8-32
255-	Siena	15	96 mm		1-3/8"	5/8"	4-3/8"	#8-32
256-	Siena	15	8"		1-3/8"	5/8"	8-3/4"	#8-32
257-	Siena	15	12"		1-3/4"	7/8"	12-3/4"	#8-32
258-	Siena	15	5"		1-1/4"	1-1/4"	6-1/4"	#8-32
260-	French Farm	65		1-5/16"	1"	3/4"		#8-32
261-	French Farm	65		1-7/8"	1"	5/8"	7/8" x 1-7/8"	#8-32
262-	French Farm	65	96 mm		7/8"	7/8" x 1/2"	6-1/2"	#8-32
263-	French Farm	65	8"		1-3/8"	2-1/4" x 1-1/4"	11-3/4"	#8-32
264-	French Farm	65	12"		1-3/4"	2-1/2" x 1-1/4"	16-1/2"	#8-32

INDEX

PART	COLLECTION	PAGE	PULL CENTER TO CENTER	KNOB DIAMETER	PROJECTION	BASE DIAMETER	OVERALL	SCREW SIZE
265-	French Farm	65	3"		1-1/8"		2" x 4-3/4"	#8-32
280-	Firenza	74	96/128 mm		7/8"	5/16"	6-1/8"	M4
281-	Firenza	74	96 mm		7/8"	5/16"	4-7/16" x 1-1/8"	M4
282-	Firenza	74	96 mm		9/16"	5/16"	4-11/16" x 1-1/2"	M4
283-	Firenza	74		1-1/8"	15/16"	1/2"		M4
284-	Firenza	74	128 mm		1-3/8"	11/16"	5-11/16"	M4
299-	Skyevale	31		1/2" x 1/2"	1"	3/8"		M4
300-	Skyevale	31		1/2" x 1/2"	1"	3/8"		M4
301-	Skyevale	31	32 mm		1"	1/4"	2-1/2"	M4
302-	Skyevale	31	128/160 mm		1-1/8"	1-1/8"	7-1/2"	M4
303-	Skyevale	31	288/320 mm		1-3/8"	1-3/8"	13-3/8"	M4
304-	Skyevale	31	32 mm		1"	1-1/4"	2-1/2"	M4
305-	Skyevale	31	128/160 mm		1-1/8"	1-1/8"	7-1/2"	M4
306-	Skyevale	31	288/320 mm		1-3/8"	1-3/8"	13-3/8"	M4
307-	Sorrento	41	32 mm		1-1/4"	2-1/2"	6-3/8"	M4
308-	Sorrento	41	96/128mm		1"	1"	5-1/2"	M4
309-	Sorrento	41	160/192 mm		1-1/8"	1-1/2"	8-1/4"	M4
310-	Sorrento	41	288/320 mm		1-1/8"	2-1/2"	13-3/8"	M4
311-	Sorrento	41	448/480 mm		1-1/4"	4"	19-5/8"	M4
312-	Sorrento	41	96/128 mm		1"	1"	5-3/8"	M4
313-	Sorrento	41	160/192 mm		1"	1"	7-7/8"	M4
314-	Sorrento	41	288/320 mm		1"	1"	13"	M4
315-	Positano	26-27	64 mm		1"	1/2"	2-7/8"	M4
316-	Positano	26-27	128 mm		1"	1/2"	5-3/8" x 1"	M4
317-	Positano	26-27	160 mm		1"	1/2"	6-5/8" x 1"	M4
318-	Positano	26-27	320 mm		1"	1/2"	13" x 1"	M4
319-	Positano	26-27	16 mm	1-1/4" x 1-1/2"	1"	1-1/4"	1-1/4" x 1-1/2"	M4
320-	Positano	26-27	128 mm		1"	1/2"	5-3/8" x 1"	M4
321-	Positano	26-27	160 mm		1"	1/2"	6-5/8" x 1"	M4
322-	Positano	26-27	224 mm		1"	1/2"	9-1/4" x 1"	M4
323-	Positano	26-27	32 mm		1-3/4"	2-1/2" x 1/2"	2-1/2" x 1-3/4"	M4
324-	Positano	26-27	128 mm		1-3/4"	6-1/4" x 1/2"	6-1/4" x 1-3/4"	M4
360-	Armadio	34		1-3/8"	7/8"	3/8"		M4
361-	Armadio	34	32 mm		1"	1-1/2" x 1/4"	4-3/4"	M4
362-	Armadio	34	64 mm		7/8"	3/4" x 1/4"	3-1/2"	M4

INDEX

PART	COLLECTION	PAGE	PULL CENTER TO CENTER	KNOB DIAMETER	PROJECTION	BASE DIAMETER	OVERALL	SCREW SIZE
363-	Armadio	34	128 mm		1"	1" x 1/4"	6-1/2"	M4
364-	Armadio	34	160/192 mm		1"	1-1/2" x 1/4"	9-1/4"	M4
365-	Armadio	34	288/320 mm		1-1/8"	1-1/2" x 1/4"	14-1/4"	M4
370-	Regatta	39	128 mm		1-1/8"	3/8" x 5/16"	7-1/4"	M4
371-	Regatta	39	224 mm		1-1/8"	3/8" x 5/16"	11-1/8"	M4
372-	Regatta	39	288 mm		1-1/8"	3/8" x 5/16"	13-5/8"	M4
373-	Regatta	39	320 mm		1-1/8"	3/8" x 5/16"	14-7/8"	M4
401-	Lumiere	23		2"	1-1/4"	7/8"	2"	#8-32
402-	Lumiere	23	12"				15"	1/4-20
404-	Lumiere	23	4"		1-1/4"	7/8"	6"	#8-32
406-	Lumiere	23	6"		1-1/4"	7/8"	8"	#8-32
408-	Lumiere	23	8"		1-1/4"	7/8"	10"	#8-32
411-	Lumiere Transitional	46		2"	1-1/4"	7/8"	2"	#8-32
412-	Lumiere Transitional	46	12"				15"	1/4-20
414-	Lumiere Transitional	46	4"		1-1/4"	7/8"	6"	#8-32
416-	Lumiere Transitional	46	6"		1-1/4"	7/8"	8"	#8-32
418-	Lumiere Transitional	46	8"		1-1/4"	7/8"	10"	#8-32
421-	Foncé	22		2"	1-1/4"	7/8"	2"	#8-32
422-	Foncé	22	12"		2"	1-1/8"	15"	1/4-20
424-	Foncé	22	4"		1-1/4"	7/8"	6"	#8-32
426-	Foncé	22	6"		1-1/4"	7/8"	8"	#8-32
428-	Foncé	22	8"		1-1/4"	7/8"	10"	#8-32
440-	Finestrino	33	32 mm		3/4"		2-3/4" x 2-3/4"	M4
441-	Finestrino	33	64 mm		3/4"		3-1/2" x 2-1/8"	M4
442-	Finestrino	33	160 mm		3/4"		7" x 2-1/8"	M4
443-	Finestrino	33	64 mm		7/8"		3-1/2" x 3-1/2"	M4
444-	Finestrino	33	96 mm		7/8"		4-5/8" x 2-1/8"	M4
445-	Finestrino	33	128 mm		7/8"		5-7/8" x 2-1/8"	M4
446-	Finestrino	33	192 mm		7/8"		8-1/2" x 2-1/8"	M4
450-	Finestrino	33	32 mm		7/8"		2-1/4" x 2-1/4"	M4
451-	Finestrino	33	160 mm		7/8"		7" x 1-3/4"	M4
454-	San Marco	20	96 mm					M4
455-	San Marco	20	160 mm					M4
456-	San Marco	20	320 mm					M4
470-	Haniburton	47		1-1/4"	1-1/8"	3/8"		#8-32

INDEX

PART	COLLECTION	PAGE	PULL CENTER TO CENTER	KNOB DIAMETER	PROJECTION	BASE DIAMETER	OVERALL	SCREW SIZE
471-	Haniburton	47		1-1/4"	1-1/8"	1-1/4 x 3/8"		#8-32
472-	Haniburton	47		1/2"	1-3/8"	5/8"	2"	#8-32
473-	Haniburton	47		1/2"	1-1/4"	5/8"	1-5/8"	#8-32
474-	Haniburton	47	4"		1-1/4"	5/8"	4-5/8"	#8-32
476-	Haniburton	47	6"		1-3/8"	5/8"	6-5/8"	#8-32
478-	Haniburton	47	8"		1-1/2"	3/4"	8-3/4"	#8-32
479-	Haniburton	47	15"		1-7/8"	1"	16"	1/4-20
501-	Italian Contemporary	35	4"		1-1/8"	3/8"	4-1/4"	#8-32
502-	Italian Contemporary	35	6"		1-1/8"	3/8"	6-3/16"	#8-32
503A-	Italian Contemporary	35	13-3/4"		2-1/8"	1"	14-3/8"	M6
511-	Italian Contemporary	35	4"		1-3/16"	3/8"	4-3/16"	#8-32
512-	Italian Contemporary	35	6"		1-3/16"	3/8"	6-1/4"	#8-32
513A-	Italian Contemporary	35	13-3/4"		2-3/4"	1"	14-1/2"	M6
522-	Menlo Park	52-53	3-1/2"		1-1/8"	3/4"	4-1/4"	#8-32
523-	Menlo Park	52-53	5"		1-1/8"	3/4"	5-3/4"	#8-32
524-	Menlo Park	52-53	10"		1-1/8"	3/4"	10-3/4"	#8-32
525-	Menlo Park	52-53	12"		1-1/8"	3/4"	12-3/4"	#8-32
526-	Menlo Park	52-53	3-1/2"		1-1/8"	3/4"	4"	#8-32
527-	Menlo Park	52-53	5"		1-1/4"	3/4"	5-1/2"	#8-32
528-	Menlo Park	52-53	10"		1-1/4"	3/4"	10-1/2"	#8-32
529-	Menlo Park	52-53	12"		1-1/4"	3/4"	12-1/2"	#8-32
530-	Menlo Park	52-53		1-1/4"	1"	3/4"		#8-32
531-	Menlo Park	52-53		1-1/4"	1"	3/4"		#8-32
532-	Menlo Park	52-53		1-1/4"	1-1/8"	3/4"		#8-32
533-	Menlo Park	52-53		1-1/4"	1-1/8"	1"		#8-32
534-	Menlo Park	52-53	3-1/2"		1-1/4"		4-1/2"	#8-32
535-	Menlo Park	52-53	15"		2"	1-1/4"	16-1/2"	1/4-20
536-	Menlo Park	52-53	8"		1-1/8"	1"	8-3/4"	#8-32
537-	Menlo Park	52-53	6"		1"	3/4"	6-3/4"	#8-32
538-	Menlo Park	52-53	4"		1-1/8"	3/4"	4-3/4"	#8-32
539-	Menlo Park	52-53	15"		2"	1-1/8"	16-1/8"	1/4-20
540-	Menlo Park	52-53	8"		1"	3/4"	8-1/2"	#8-32
541-	Menlo Park	52-53	6"		1"	1/2"	6-1/2"	#8-32
542-	Menlo Park	52-53	4"		1"	1/2"	4-1/2"	#8-32
550-	Heathrow	21		1-1/4"	1"	3/4"		#8-32

INDEX

PART	COLLECTION	PAGE	PULL CENTER TO CENTER	KNOB DIAMETER	PROJECTION	BASE DIAMETER	OVERALL	SCREW SIZE
551-	Heathrow	21		1-1/4"	1"	3/4"		#8-32
552-	Heathrow	21		1-3/4"	1-1/4"	3/4"		#8-32
553-	Heathrow	21	4"		1-1/4"	3/4"	5-3/4"	#8-32
554-	Heathrow	21	6"		1-3/8"	3/4"	8"	#8-32
555-	Heathrow	21	8"		1-3/8"	3/4"	10-1/4"	#8-32
557-	Heathrow	21	12"		2"	1"	14-1/2"	1/4-20
558-	Heathrow	21	18"		2"	1"	20-1/2"	1/4-20
559-	Heathrow	21	24"		2"	1"	26-1/2"	1/4-20
560-	Heathrow	21	3-1/2"		1-1/4"	3/4"	5-1/4"	#8-32
561-	Heathrow	21	5"		1-1/4"	3/4"	6-3/4"	#8-32
562-	Heathrow	21	10"		1-1/4"	3/4"	11-3/4"	#8-32
563-	Heathrow	21	12"		1-1/4"	3/4"	13-3/4"	#8-32
570-	Atherton	59		1-1/4"	1-1/8"	3/4"		#8-32
571-	Atherton	59		1-1/4"	1-1/8"	3/4"		#8-32
572-	Atherton	59		1-1/4"	1-1/8"	3/4"		#8-32
573-	Atherton	59	3"		1-1/2"		4-1/2" x 2"	#8-32
574-	Atherton	59	3"		1-1/2"		4-1/2" x 2"	#8-32
575-	Atherton	59	3"		1-1/2"		4-1/2" x 2"	#8-32
576-	Atherton	59	4"		1-1/4"	1-1/4" w/o plate 1/2"	4-1/2"	#8-32
577-	Atherton	59	8"		1-1/2"	1-1/4" w/o plate 1/2"	8-1/2"	#8-32
578-	Atherton	59	15"		2"	1-1/2" w/o plate 5/8"	15-3/4"	1/4-20
579-	Atherton	59	4"		1-1/4"	1-1/4" w/o plate 1/2"	4-1/2"	#8-32
580-	Atherton	59	8"		1-1/2"	1-1/4" w/o plate 1/2"	8-1/2"	#8-32
581-	Atherton	59	15"		2"	1-1/2" w/o plate 5/8"	15-3/4"	1/4-20
610-	Crescendo	78	1-1/2"		1"	3/8"	2-1/4" x 7/8"	#8-32
611-	Crescendo	78	5-5/8"		1"	3/4"	6"	#8-32
615-	Crescendo	78		2" x 7/8"	1"	3/8"	7/8" x 2"	#8-32
616-	Crescendo	78	5-5/8"		1"	3/4"	6"	#8-32
620-	Interlude	79	1-1/4"		1"	1/2"	1-3/4"	#8-32
621-	Interlude	79	4-1/2"		1-1/8"	1/2"	5"	#8-32
622-	Interlude	79	5-3/8"		1-1/4"	1/2"	6"	#8-32
630-	Arioso	81	1-3/4"		1"	1/2"	2"	#8-32
631-	Arioso	81	3-3/4"		1"	1/2"	4"	#8-32
632-	Arioso	81	5-5/8"		1-1/8"	1/2"	6"	#8-32
635-	Arioso	81	2-7/8"		1"	3/8"	3-1/2"	#8-32

INDEX

PART	COLLECTION	PAGE	PULL CENTER TO CENTER	KNOB DIAMETER	PROJECTION	BASE DIAMETER	OVERALL	SCREW SIZE
636-	Arioso	81	4-7/8"		1-1/8"	3/8"	6"	#8-32
640-	Cadence	80		1-3/4"	1"	5/16"	1-3/4" x 1"	#8-32
641-	Cadence	80	5-1/2"		1"	3/4" x 1"	6-1/2"	#8-32
645-	Cadence	80	1-3/8"	1-7/8"	1"	3/8"	1-7/8" x 1"	#8-32
646-	Cadence	80	5-1/2"		1"	3/8"	7/8" x 6"	#8-32
650-	Fair Isle	82		1-1/8"	1"	1/2"		#8-32
651-	Fair Isle	82		1-1/2"	1-1/4"	1/2"		#8-32
653-	Fair Isle	82		1-3/8"	1-1/8"	1/2"		#8-32
654-	Fair Isle	82		1-1/4" x 7/8"	1-1/4"	3/4" x 5/8"		#8-32
655-	Fair Isle	82		1-1/2"	1-3/8"	3/4"		#8-32
656-	Fair Isle	82	3/4"		1-1/4"	1/4"	2-1/4" x 1-3/4"	#8-32
657-	Fair Isle	82		1-5/8" x 1-1/8"	1"	3/8"		#8-32
658-	Avalon Bay	83		1-3/8" x 1-3/8"	1-1/8"	3/4"		#8-32
659-	Avalon Bay	83		1-7/8" x 1-1/4"	1-1/4"	7/8"		#8-32
660-	Avalon Bay	83	3"		1-1/4"	3/8"	4"	#8-32
661-	Avalon Bay	83		1-7/8" x 1"	1-1/8"	1/2" x 1/2"		#8-32
662-	Avalon Bay	83	4"		1-1/8"	1-1/8" x 1/2"	4-7/8"	#8-32
664-	Imperial Shell	84		1-1/2" x 1-1/4"	1"	1/2"		#8-32
671-	Avalon Bay	83		1-1/4" x 1-1/4"	1"	1/2"		#8-32
703-	Traditional	60-61		1-1/4"	7/8"	3/4"		#8-32
704-	Traditional	60-61		1-1/2"	1"	1"		#8-32
706-	Traditional	60-61		1-1/4"	1"	3/4"		#8-32
711-	Traditional	60-61		1-1/4"	7/8"	5/8"		#8-32
719-	Traditional	60-61		1-3/8"	1-1/4"	1/2"		#8-32
721-	Traditional	60-61	3"		7/8"	3/8"	3-3/8"	#8-32
730-	Traditional	60-61	3"		1"		3-3/4" x 1-1/4"	#8-32
731-	Traditional	60-61	3"		1"		4-5/8" x 1-3/8"	#8-32
732-	Traditional	60-61	4"		1-1/8"	3/8"	4-3/8"	#8-32
737-	Traditional	60-61	6"		1-1/4"	1/2"	6-3/8"	#8-32
738-	Traditional	60-61	15"		2-1/4"	3/4"	15-1/2"	1/4-20
739-	Traditional	60-61	10"		2-1/8"	1" x 5/8"	10-1/2"	1/4-20
742-	Country	63	4"		1-1/8"	1"	5-1/8"	#8-32
743-	Country	63	3"		3/4"		3-3/4" x 1"	#8-32
744-	Country	63	6"		3/4"		6 5/8" x 1"	#8-32
745-	Country	63	6"		1-1/4"	1-1/8"	7-1/2"	#8-32

INDEX

PART	COLLECTION	PAGE	PULL CENTER TO CENTER	KNOB DIAMETER	PROJECTION	BASE DIAMETER	OVERALL	SCREW SIZE
746-	Country	63	12"		1-13/16"	1-13/16"	14-1/4"	1/4-20
747-	Colonial	64	4"		1-3/16"	7/16"	4-5/16"	#8-32
748-	Colonial	64	6"		1-7/8"	3/4"	6-5/8"	1/4-20
749-	Colonial	64	12"		2-1/4"	7/8"	12-7/8"	1/4-20
751-	Versailles	70		1-1/4"	1"	1/2"		#8-32
752-	Versailles	70		1-1/2"	1-1/4"	5/8"		#8-32
753-	Versailles	70	3"		1-1/8"	3/4" x 3/8"	4-1/8"	#8-32
754-	Versailles	70	3-1/2"		1-1/8"	3/4" x 3/8"	4-1/2"	#8-32
756-	Versailles	70			1/8"	1-1/2"		#8-32
761-	Versailles	70			1/8"		4-1/4" x 1"	#8-32
762-	Versailles	70	96 mm		1-1/8"	1/2"	4-1/4"	#8-32
763-	Versailles	70	96 mm		1/8"		7-3/16" x 1"	#8-32
764-	Versailles	70	10"		2-1/2"	7/8"	10-3/4"	1/4-20
765-	Vinci	13		1"	15/16"	1/2"		#8-32
768-	Mountain	8-9		2"	1-3/8"	1/2"		#8-32
771-	Mountain	8-9		1-1/4"	1-1/8"	1/2"		#8-32
772-	Mountain	8-9		1-3/8"	1-1/4"	5/8"		#8-32
773-	Mountain	8-9		1-5/8"	1-1/4"	5/8"		#8-32
775-	Mountain	8-9	3-1/2"		1"		4-1/8" x 1-3/4"	#8-32
776-	Ovale	14		1-3/4"	1-1/8"	3/4"		#8-32
777-	Mountain	8-9	4"		1-1/4"	1" x 3/4"	5"	#8-32
778-	Mountain	8-9	6"		1-1/4"	1-1/8" x 7/8"	7-1/4"	#8-32
779-	Mountain	8-9	12"		1-5/8"	1-1/8" x 7/8"	13"	1/4-20
780-	Mountain	8-9	18"		1-3/4"	1-1/2" x 1-1/8"	19-3/8"	1/4-20
781-	Mountain	8-9		1-3/8"	1-3/8"	5/8"		#8-32
782-	Mountain	8-9		1-7/8"	1-1/4"	5/8"	1-7/8" x 1"	#8-32
783-	Mountain	8-9	4"		1-1/2"	3/8"	6"	#8-32
784-	Mountain	8-9	6"		1-3/4"	3/8"	7-1/4"	#8-32
785-	Mountain	8-9	12"		2-1/8"	5/8"	15-5/8"	1/4-20
786-12-	Vinci	13	12"					#8-32
787-5-	Ovale	14	5"		1-3/8"	1/2" x 3/4"	5-7/8" x 7/8"	#8-32
787-10-	Ovale	14	10"		1-1/2"	5/8" x 7/8"	10-15/16" x 15/16"	1/4-20
787-18-	Ovale	14	18"		1-3/4"	3/4" x 1"	19" x 1-3/16"	1/4-20
787-96-	Ovale	14	96mm		1-3/8"	1/2" x 3/4"	5-7/8" x 7/8"	#8-32
787-128-	Ovale	14	128 mm		1-3/8"	1/2" x 3/4"	5-7/8" x 7/8"	1/4-20

INDEX

PART	COLLECTION	PAGE	PULL CENTER TO CENTER	KNOB DIAMETER	PROJECTION	BASE DIAMETER	OVERALL	SCREW SIZE
788-12-	Vinci	13	12"		1-1/2"	7/16"	12-1/2"	1/4-20
788-18-	Vinci	13	18"		1-9/16"	1/2"	18-5/8"	1/4-20
788-18A-	Vinci	13	18"		2"	5/8"	18-3/4"	1/4-20
788-4-	Vinci	13	4"		1-1/8"	5/16"	4-5/16"	#8-32
788-5-	Vinci	13	5"		1-1/4"	3/8"	5-5/16"	#8-32
788-6-	Vinci	13	6"		1-1/4"	3/8"	6-5/16"	#8-32
788-8-	Vinci	13	8"		1-1/4"	3/8"	8-5/16"	#8-32
789-	Vinci	13		1-1/4"	1-1/4"	1/2"		#8-32
790-	Montcalm	69		1-3/8"	1-1/4"	7/8"		#8-32
791-	Montcalm	69	96 mm		1-1/8"	1" x 5/8"	5-1/2"	#8-32
793-	Montcalm	69	3"		1"		4-1/8" x 2"	#8-32
794-	Montcalm	69		1-3/8"	1-1/8"	3/4"		#8-32
795-	Montcalm	69			1/4"	1-1/2"		#8-32
796-	Montcalm	69			1-1/8"	3/4"	1-1/2" x 1"	#8-32
797-	Montcalm	69	96 mm		1-1/8"	1/2"	4-1/2"	#8-32
800-	Meridian	68		1-3/8"	1-1/4"	1/2"		#8-32
801-	Meridian	68	96 mm		1-3/8"	5/8"	4-3/8"	#8-32
802-	Meridian	68	15"		3-1/16"	1-1/4"	16-1/4"	1/4-20
803-	Meridian	68	6"		1-3/8"	5/8"	7-5/8"	#8-32
805-	Ovale	14		1 1/4"	1"	1/2" x 1/4"		#8-32
808-	Ovale	14		1 1/4" x 1"	7/8"	1/2" x 1/4"		#8-32
809-	Ovale	14		1 1/4"	3/4"	1/2" x 1/4"		#8-32
810-	Vinci	13		1 1/4" x 1 1/4"	1"	1/2" x 1/4"		#8-32
814-	Vinci	13		1 1/4" x 7/8"	7/8"	1/2" x 1 1/4"		#8-32
815-	Vinci	13		1-3/4" x 1-3/4"	1-1/4"	1/2"		#8-32
816-	Vinci	13	96 mm		1"	6" x 1-1/4"	6" x 1-1/4"	#8-32
817-	French Court	90 - 92		1-1/4" x 1-3/8"	1-1/2"	7-3/8" x 1-1/4"	7-3/8" x 1-1/4"	#8-32
818-	Imperial Shell	84		1-3/8"	1"	1"		#8-32
819-	Imperial Shell	84	3"		3/4"	3-11/16" x 3/8"	4-1/2"	#8-32
830-	Arcadia	71		1-3/8"	1-1/4"	1/2"		#8-32
831-	Arcadia	71		1-3/4"	1-1/4"	1/2"	1-3/4" x 7/8"	#8-32
832-	Arcadia	71			1/8"		4-1/4" x 7/8"	#8-32
833-	Arcadia	71	96 mm		1-1/4"	3/4"	4-3/4"	#8-32
834-	Arcadia	71	3"		1-1/4"		3-3/4" x 1-5/8"	#8-32
835-	Arcadia	71	15"		2-1/2"	1-1/4"	15-3/4"	1/4-20

INDEX

PART	COLLECTION	PAGE	PULL CENTER TO CENTER	KNOB DIAMETER	PROJECTION	BASE DIAMETER	OVERALL	SCREW SIZE
836-	Arcadia	71	6"		1-1/4"	3/4"	7"	#8-32
850-	Imperial Shell	84	4-1/2"		7/8"		7/8" x 5-1/2"	#8-32
851-	Imperial Shell	84		1-1/2"	5/8"	1"	1-1/2" x 1-1/4"	#8-32
852-	Imperial Shell	84	3"		3/4"	1"	1-1/4" x 4-1/2"	#8-32
853-	Imperial Shell	84		1-3/8"	1"	7/8"		#8-32
854-	Imperial Shell	84	3"		1-1/2"		3-1/2"	#8-32
857-	Imperial Shell	84		1-1/4"	1-3/4"	7/8"		#8-32
858-	Imperial Shell	84	4"		1"		3/4" x 6-1/4"	#8-32
859-	Eastlake	87		1-1/2"	1"	3/4"		#8-32
860-	Eastlake	87		1-3/4"	1"	3/4"		#8-32
861-	Eastlake	87	3-1/2"		1-1/4"		1-1/8" x 3-7/8"	#8-32
864-	Nature	99			1"		2-3/8" x 3-1/2"	#8-32
865-	Nature	99	3-5/8"		2-1/8"		1-1/2" x 8-5/8"	#8-32
868-	Corinthian	73	15"		2-1/8"	2-3/4" x 2"	18-5/8"	1/4-20
869-	Casual Elegance	72	15"		1-7/8"	2-3/8" x 1-7/8"	17-1/4"	1/4-20
870-	Corinthian	73		1-3/8"	1-1/4"	1"		#8-32
871-	Corinthian	73	96 mm		1"	1-1/2"	6-1/2"	#8-32
872-	Corinthian	73	3"		1"		4-3/4" x 1-3/4"	#8-32
873-	Casual Elegance	72		1-3/8"	1-1/8"	7/8"		#8-32
874-	Casual Elegance	72	96 mm		1-1/8"	1-1/4"	5-3/4"	#8-32
875-	Casual Elegance	72	3"		1"		4-1/4" x 1-3/4"	#8-32
876-	Empire	54		1-3/8"	1-1/8"	1"		#8-32
877-	Empire	54	4"		1-1/4"	7/8"	4-7/8"	#8-32
878-	Empire	54	3"		1-1/4"		4-3/8" x 1-7/8"	#8-32
879-	Empire	54	8"		1-1/4"	7/8"	8-7/8"	#8-32
880-	Empire	54	12"		1-5/8"	1-1/8"	13-1/8"	1/4-20
881-	Empire	54	15"		1-7/8"	1-3/16"	16"	1/4-20
882-	Empire	54		1-3/8"	1-1/8"	1"		#8-32
883-	Empire	54	3-1/2"		1-1/4"	7/8"	4"	#8-32
884-	Empire	54	5"		1-1/4"	7/8"	5-1/2"	#8-32
885-	Empire	54	6"		1-1/4"	7/8"	6-1/2"	#8-32
886-	Empire	54	10"		1-1/4"	7/8"	10-1/2"	#8-32
887-	Empire	54	12"		1-1/4"	7/8"	12-1/2"	#8-32
891-	Nature	99	1-1/2"		1-1/4"		2" x 2-7/8"	#8-32
892-	Nature	99	3-1/8"		1-3/8"		2-5/8" x 4-7/8"	#8-32

INDEX

PART	COLLECTION	PAGE	PULL CENTER TO CENTER	KNOB DIAMETER	PROJECTION	BASE DIAMETER	OVERALL	SCREW SIZE
895-	Nature	99	5-1/2"		2-3/4"		1-3/8" x 6-3/4"	#8-32
897-	Nature	99			1-1/4"	1-1/4" x 1-1/2"	3" x 1-3/8"	#8-32
908-	Nature	99	3-3/4"		1-1/8"		1-1/8" x 6-1/8"	#8-32
915-	French Court	90 - 92	2"		7/8"		1-3/8" x 4-1/2"	#8-32
918-	Nature	99	4-1/4"		1-1/2"		1-1/2" x 4-3/4"	#8-32
919-	French Court	90 - 92	6-1/2"		1-11/16"		1-11/16" x 7-3/8"	#8-32
921L-	Sunflower	95		1-3/4"	1-1/8"	7/8"		#8-32
921M-	Sunflower	95		1-1/2"	15/16"	3/4"		#8-32
921S-	Sunflower	95		1-3/8"	7/8"	7/16"		#8-32
922-	Sunflower	95	5"		1-1/2"	1-1/4"	1-1/4" x 6-1/4"	#8-32
927-	Sonata	96		1-1/4"	1-1/8"	5/8"		#8-32
930-	Sonata	96		1-1/4"	1-1/8"	13/16"		#8-32
931-	Chalice	87		1-9/16"	1-1/16"	13/16"		#8-32
932-	Chalice	87		2-1/8"	1-1/2"	1-1/2"		#8-32
933-	Chalice	87			7/8"		2-9/16" x 2-3/8"	#8-32
934L-	French Court	90 - 92	5"		1-1/2"		2-3/8" x 7-1/8"	#8-32
934R-	French Court	90 - 92	5"		1-1/2"		2-3/8" x 7-1/8"	#8-32
935L-	French Court	90 - 92	3-1/2"		1-1/4"		1-11/16" x 5"	#8-32
935R-	French Court	90 - 92	3-1/2"		1-1/4"		1-11/16" x 5"	#8-32
936-	Swans	93		1-1/4"	1"	7/8"		#8-32
937-	Swans	93		1-1/2"	1-3/16"	1"		#8-32
939-	Swans	93	3"		1-5/8"	1-3/16"	9/16" x 4-1/8"	#8-32
940-	Swans	93	5"		2-5/8"	1-1/2"	7/8" x 6-3/4"	#8-32
941-	Swans	93	9"		4-5/8"	2-11/16"	1-3/4" x 12-3/8"	1/4/20
942M-	Wine Themes	98	6"		3-3/4"	3/4" x 1"	2-1/8" x 8"	1/4/20
942S-	Wine Themes	98	3"		1-3/4"	3/8" x 1/2"	7/8" x 4"	#8-32
944-	Wine Themes	98	1-1/2"		1-1/4"		1-1/4" x 4-1/2"	#8-32
945-	Wine Themes	98	4-9/16"		1-5/8"		2-1/8" x 5-1/4"	#8-32
951S-	Nature	99	1-5/8"		1-1/4"		2-3/8" x 4-1/2"	#8-32
952K-	Heirloom Treasures	97		1-1/2"	1"	1/2"		#8-32
952P-	Heirloom Treasures	97	5"		7/8"		1-1/8" x 5-5/8"	#8-32
953K-	Heirloom Treasures	97		1-1/2"	1"	1/2"		#8-32
953P-	Heirloom Treasures	97	5"		3/4"		1-1/4" x 5-7/8"	#8-32
954K-	Heirloom Treasures	97		1-1/2"	1"	1/2"		#8-32
954P-	Heirloom Treasures	97	3-3/4"		1"		1-5/16" x 4-3/8"	#8-32

INDEX

PART	COLLECTION	PAGE	PULL CENTER TO CENTER	KNOB DIAMETER	PROJECTION	BASE DIAMETER	OVERALL	SCREW SIZE
958K-	Heirloom Treasures	97		1-11/16" x 1-1/2"	1"	3/8"		#8-32
958P-	Heirloom Treasures	97	6-1/2"		1-1/4"		1" x 7-3/8"	#8-32
960K-	Heirloom Treasures	97		1-1/2"	1"	5/8"		#8-32
960P-	Heirloom Treasures	97	6"		1-3/8"		1-3/8" x 7"	#8-32
967M-	Sonata	96		1-1/8"	7/8"	1-3/8"		#8-32
968M-	Sonata	96		1-5/16"	1"	5/8"		#8-32
969M-	Sonata	96		1-1/4"	1-1/8"	1-1/2"		#8-32
970-	Sunburst	94		1-1/4"	1-1/16"	1-11/16"		#8-32
972-	Sunburst	94		1-3/8"	1"	5/8"		#8-32
974-	Sunburst	94		1-1/2"	1-1/2"	3/4"		#8-32
975S-	Sunburst	94	5"		1-5/8"		1-1/8" x 6-1/8"	#8-32
977-	Sunburst	94		2-1/4"	5/8"	1-3/4"	2-1/4" x 3"	#8-32
978-	Sunburst	94	5-1/2"		3/4"	1-3/8"	2-1/8" x 6-5/8"	#8-32
980L-	Nature	99		1-1/2" x 1-1/4"	3/4"	1/2"		#8-32
980R-	Nature	99		1-1/2" x 1-1/4"	3/4"	1/2"		#8-32
982-	Sonata	96		11/16"	1"	1-15/16"		#8-32
987-	French Court	90 - 92	3-1/2"		5/8"		2-3/4" x 6"	#8-32
988-	French Court	90 - 92	5-3/8"		3/4"		2-3/4" x 8"	#8-32
989-	Imperial Shell	84		1-3/8"	15/16"		2-3/4"	#8-32
990-	Imperial Shell	84		1-3/8"	1-1/8"	7/8"		#8-32
992-4-	Imperial Shell	84	4"		1-1/16"	3/8"	4-3/4"	#8-32
992-6-	Imperial Shell	84	6"		1-1/16"	5/8"	7"	#8-32
992-8-	Imperial Shell	84	8"		1-1/16"	1/2"	9"	#8-32
993-	Cantata	88 - 89	5/8"		1"	3/4" x 3/8"	1-1/4" x 2"	#8-32
994-	Cantata	88 - 89		1-1/4"	1"	3/8"		#8-32
995-	Cantata	88 - 89	5"		1-3/8"	1/4"	7-1/2"	#8-32
996-	Cantata	88 - 89		2" x 7/8"	1"	1/2"		#8-32
997-	Cantata	88 - 89	8"		2-3/8"	1/2"	12"	#8-32
998-	Cantata	88 - 89	12"		3-1/4"	3/4"	18"	1/4/20
1100B-	Hinges	75			1/16"	2-1/2" x 7/8"	3"-L	#5
1100M-	Hinges	75			1/16"	2-1/2" x 7/8"	3-5/8"-L	#5
1111B-	Hinges	75			1/16"	2" x 3/4"	2-5/8"-L	#5
2340-	Mosaic	30	32 mm	2"	1"	1/2" x 1/4"		M4
2360-	Mosaic	30	96 mm		7/8"	3/8"	5-1/4"	M4
2370-	Mosaic	30		1-1/8"	3/4"	1/2"		M4

INDEX

PART	COLLECTION	PAGE	PULL CENTER TO CENTER	KNOB DIAMETER	PROJECTION	BASE DIAMETER	OVERALL	SCREW SIZE
7465-	Country	63	15"		2"	1-3/4"	17-1/2"	1/4-20
7495-	Colonial	64	15"		2"	1"	16"	1/4-20
7915-	Montcalm	69	15"		1-3/4"	1-3/4" x 1-1/4"	18-1/2"	1/4-20
7918-	Montcalm	69	8"		1"	1" x 5/8"	9-3/4"	#8-32
7975-	Montcalm	69	15"		1-3/4"	7/8" x 3/4"	16-1/2"	1/4-20
7978-	Montcalm	69	8"		1-1/8"	1/2" x 1/2"	8-3/4"	#8-32
8716-	Corinthian	73	6"		1-1/4"	1-5/8"	8-3/4"	#8-32
8746-	Casual Elegance	72	6"		1-1/8"	1-1/4"	8"	#8-32
SS 010	Stainless Steel	43		3/4"	1-1/8"	3/4"		#8-32
SS 012	Stainless Steel	43		1-1/8"	7/8"	3/4"		#8-32
SS 014	Stainless Steel	43		1/2"	1-3/8"	1/2"	1-3/8"	#8-32
SS 096	Stainless Steel	43	96 mm		1-3/8"	1/2"	6-1/8"	#8-32
SS 128	Stainless Steel	43	128 mm		1-3/8"	1/2"	7-3/8"	#8-32
SS 160	Stainless Steel	43	160 mm		1-3/8"	1/2"	8-5/8"	#8-32
SS 224	Stainless Steel	43	224 mm		1-3/8"	1/2"	11-1/8"	#8-32
SS 288	Stainless Steel	43	288 mm		1-3/8"	1/2"	13-3/4"	#8-32
SS 384	Stainless Steel	43	384 mm		1-3/8"	1/2"	17-1/2"	#8-32
SS 448	Stainless Steel	43	448 mm		1-3/8"	1/2"	20"	#8-32
SS 544	Stainless Steel	43	544 mm		1-3/8"	1/2"	23-3/4"	#8-32
SS 640	Stainless Steel	43	640 mm		1-3/8"	1/2"	27-1/2"	#8-32
SS 736	Stainless Steel	43	736 mm		1-3/8"	1/2"	31-3/8"	#8-32
SS 832	Stainless Steel	43	832 mm		1-3/8"	1/2"	35-1/8"	#8-32
SS BOW 096	Stainless Steel	43	96 mm		1-1/8"	3/8" x 1/2"	4-1/2"	#8-32
SS BOW 128	Stainless Steel	43	128 mm		1-1/8"	3/8" x 5/8"	6-1/8"	#8-32
SS BOW 224	Stainless Steel	43	224 mm		1-1/8"	3/8" x 1"	10-1/4"	#8-32
SS BOW 288	Stainless Steel	43	288 mm		1-1/8"	3/8" x 1-1/8"	13-1/4"	#8-32



House of Jade Kitchen
@houseofjadeinteriors
Lindsay Salazar Photography



Love It or List It Vancouver
@hgtvcanada
Janis Nicolay Photography



Love It or List It Vancouver
@hgtvcanada
Janis Nicolay Photography



The English Room
@theenglishroom
Dustin Peck Photography



Allison Knizek Design
@a.k.nackfordesign
Troy Nikolic Photography



Gowler Homes
@gowlerhomes
Jacey Caldwell Photography



Gowler Homes
@gowlerhomes
Jacey Caldwell Photography



Gowler Homes
@gowlerhomes
Jacey Caldwell Photography



Gowler Homes
@gowlerhomes
Jacey Caldwell Photography



Love It or List It Vancouver
@hgtvcanada
Janis Nicolay Photography



Love It or List It Vancouver
@hgtvcanada
Janis Nicolay Photography



Design Loves Detail
@designlovesdetail
Travis J Photography

ASSA ABLOY is the global leader in door opening solutions, dedicated to satisfying end-user needs for security, safety and convenience

Schaub
ASSA ABLOY

Phone: 616.871.0040

Fax: 800.453.2196

schaubandcompany.com

